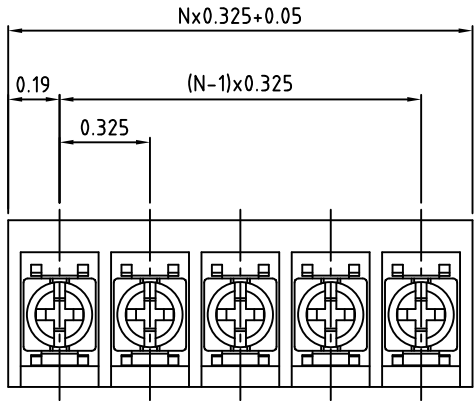
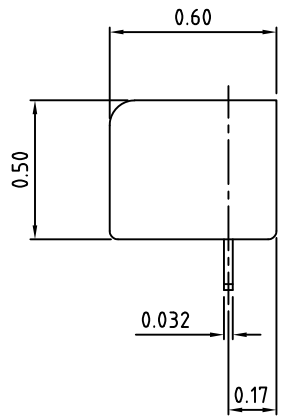
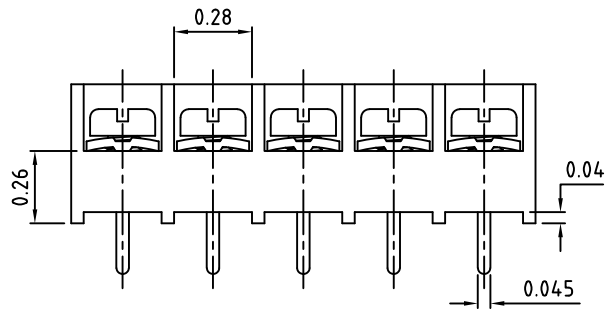


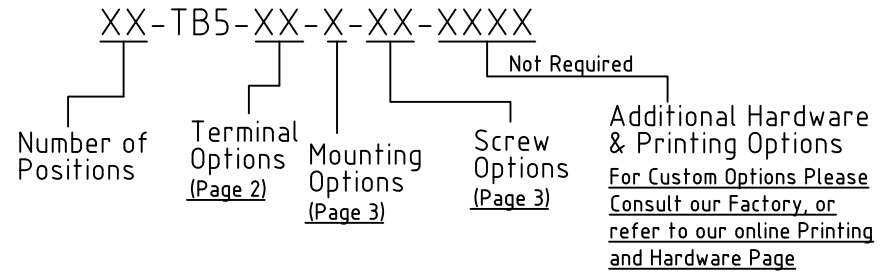
Material:	
Contact Solder Pin:	Brass, Tin Plated
Terminal Screw:	#6-32, Screw options on page 3
Insulating Body:	Polyamide, UL94V-0, Black
Electrical	
Voltage Rating:	300 VAC
Current rating:	20 AMPS
Wire Range:	12-22 AWG
Withstand Voltage:	2500 VAC, Test time 60 seconds
Mechanical	
Torque:	10 lbs-in. MAX
Operating Temperature:	-40°C to +105°C -40°F to +221°F
Soldering Temperature:	260°C, 500°F for 5 seconds max.
Safety Approval:	



N=Number of Positions



Part Number Configuration.  
For More Details, go to next page(s)



Max Number of Positions = 30

UNLESS OTHERWISE SPECIFIED BREAK ALL SHARP EDGES AND DEBURR ALL HOLES	TITLE: <b>0.325" SPACING, BARRIER BLOCK</b>
---	--

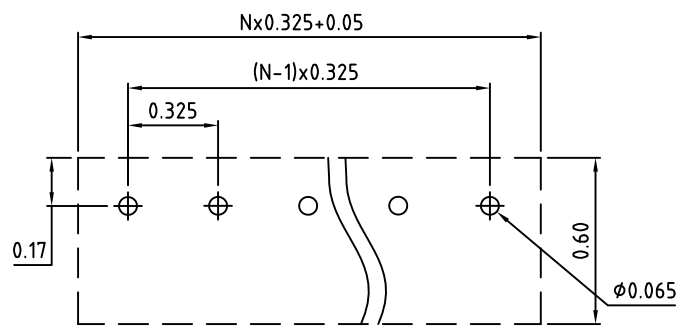
LIMITS: UNLESS OTHERWISE SPECIFIED HUND.±.02 FRACT.±1/64 THOU.±.005 ANGLE±1°	SCALE	THIS IS A CONFIDENTIAL DRAWING AND MUSTBE TREATED AS SUCH. NO DISTRIBUTION IS ALLOWED WITHOUT WRITTEN APPROVAL BY EBY ELECTRO INC.	 PLAINVIEW, NY 11803
--	-------	--	-------------------------

# Terminal Options

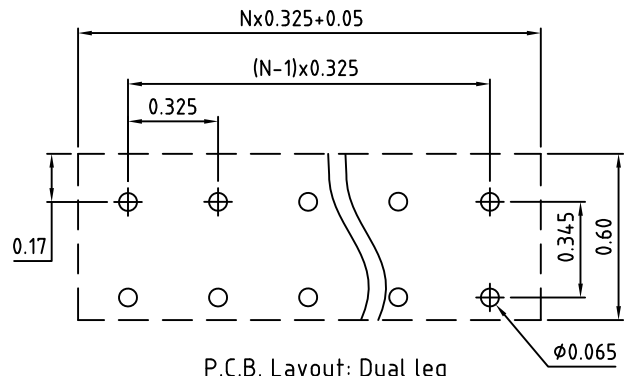
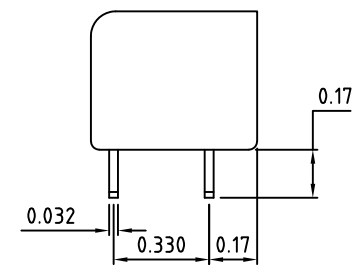
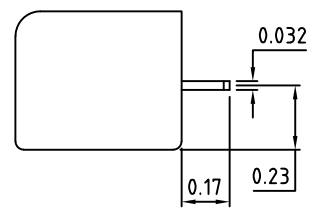
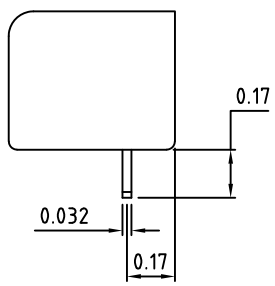
PC - PC Mount

RA - Right Angle PC Mount

DL - Dual PC Mount



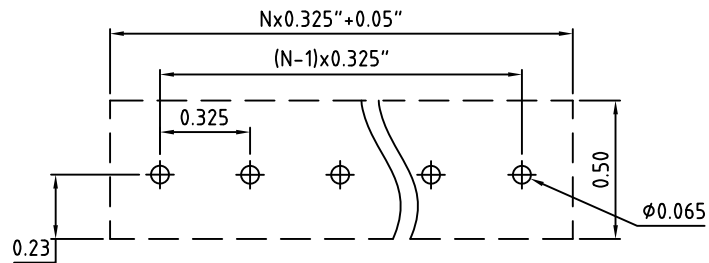
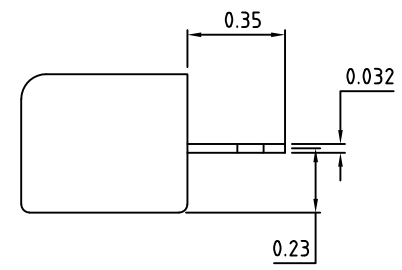
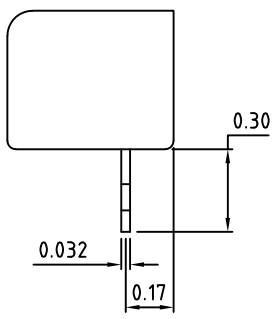
P.C.B. Layout



P.C.B. Layout: Dual leg

SV - Solder Turret

SR - Right Angle Solder Turret



P.C.B. Layout: Right Angle

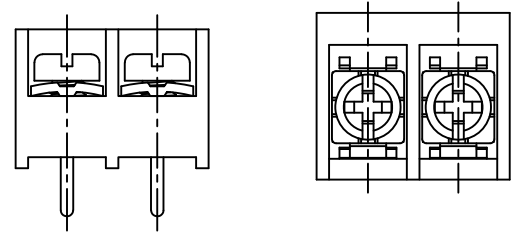
UNLESS OTHERWISE SPECIFIED BREAK ALL SHARP EDGES AND DEBURR ALL HOLES

TITLE: Part Number Configuration for TB5 Series

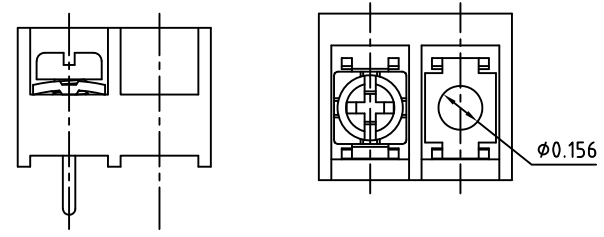
LIMITS: UNLESS OTHERWISE SPECIFIED HUND. ±0.02 FRACT. ±1/64 THOU. ±0.005 ANGLE ±1°	SCALE	THIS IS A CONFIDENTIAL DRAWING AND MUST BE TREATED AS SUCH. NO DISTRIBUTION IS ALLOWED WITHOUT WRITTEN APPROVAL BY EBY ELECTRO INC.	 PLAINVIEW, NY 11803
--	-------	---	-------------------------

### Mounting Options

N - No Mounting



W - Mounting with End Barriers



### Available Screw Options

- 00 - No Screws
- 01 - Steel, Zinc Plated,
- 02 - steel, Zinc plated, w/ Washer
- 03 - Brass, Nickel Plated
- 04 - Brass, Nickel Plated, w/ Washer
- 05 - Stainless Steel, Phillips Head
- 09 - Stainless Steel, w/ Washer
- 11 - Steel, Zinc Plated, Captive
- 12 - Steel, Zinc Plated, Captive, w/ Washer
- 13 - Brass, Nickel Plated, Captive
- 14 - Brass, Nickel Plated, Captive, w/ Washer
- 21 - Steel, Zinc Plated, Captive, Wire Ready
- 22 - Steel, Zinc Plated, Captive, Wire Ready, w/ Washer
- 23 - Brass, Nickel Plated, Captive, Wire Ready
- 24 - Brass, Nickel Plated, Captive, Wire Ready, w/ Washer
- 32 - Steel, Nickel Plated, w/Washer
- 46 - Steel, Zinc Plated, Thread Interrupt, Wire Ready, w/ Washer

UNLESS OTHERWISE SPECIFIED BREAK ALL SHARP EDGES AND DEBURR ALL HOLES

TITLE: Part Number Configuration for TB5 Series

LIMITS: UNLESS OTHERWISE SPECIFIED  
 HUND. ± 0.02 FRACT. ± 1/64  
 THOU. ± 0.005 ANGLE ± 1°

SCALE THIS IS A CONFIDENTIAL DRAWING AND MUST BE TREATED AS SUCH. NO DISTRIBUTION IS ALLOWED WITHOUT WRITTEN APPROVAL BY EBY ELECTRO INC.

**EBY** Electro Inc.  
 PLAINVIEW, NY 11803

IMPORTANT DISCLAIMER: All information provided on this print is for reference. Always perform your own tests and acquire samples and further information to determine product suitability. While we make effort to provide accurate information, we cannot be responsible for errors either of omission or typographical. EBY Electro, Inc. assumes no responsibility for the use or suitability of any product. All products and specifications are subject to change without prior written notice.

METRIC LIMITS ONE PLACE ± 0.3 TWO PLACES ± 0.10 ANGLE ± 1°	DRAWN <u>  </u> JM CHECKED <u>  </u> APPROVED <u>  </u>	DATE 11/02/10 DATE <u>  </u> DATE <u>  </u>	SIZE <b>A</b>	DRAWING NUMBER: TB5-0003	REV. D
---	---	---	------------------	-----------------------------	-----------