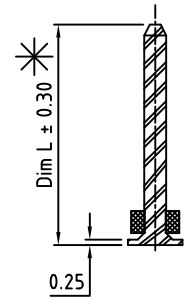
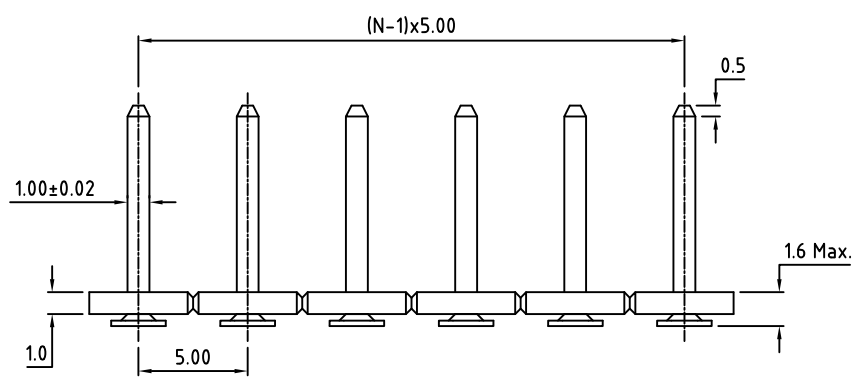
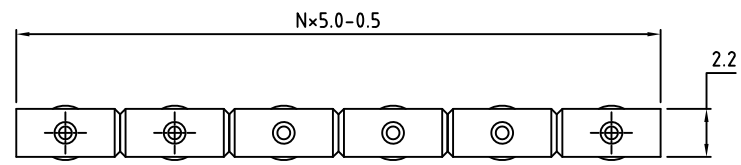


RoHS Compliant

Rev.	ECO#	Date	By
R	1552-1023	10/05/23	MWP



Material:	
Contact Solder Pin:	Brass, 120-240µ" Sn over 80-120µ" Ni
Insulating Body:	PA46 (glass Filled), UL94V-0 Suitable for Reflow
Cover Plastic (Optional):	Polyamide, PA46
Electrical	
Voltage Rating:	300 VAC
Current rating:	10 Amps
Withstand Voltage:	1500 VAC, Test time 60 sec
Mechanical	
Operating Temperature:	-40°C to +105°C -40°F to +221°F
Soldering Temperature:	260°C, 500°F for 5 seconds
Safety Approval:	US

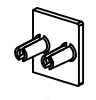
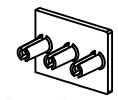
Part Number Configuration.

PS5X4-XX-01X

- * Pin Height Option See Chart Below
- Number of Positions
- Packaging Option
 - 0-Bulk
 - 1-Tape and Reel (Cover on all pins)
 - 2-Tape and Reel cover on center pins

PS524	Dim L = 6.50mm
PS534	Dim L = 13.00mm
PS544	Dim L = 14.20mm
* PS554	Dim L = 10.15mm
PS564	Dim L = 15.50mm
PS574	Dim L = 12.70mm
PS584	Dim L = 8.50mm

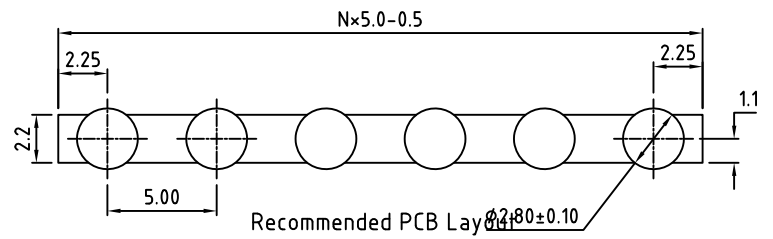
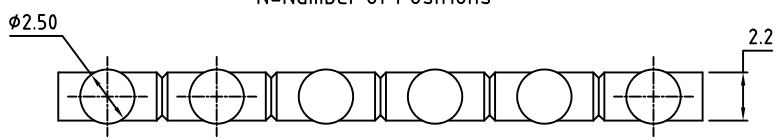
Pickup Covers (Optional)



3 Pole Cover for Odd # of poles

2 Pole Cover for Even # of poles

N=Number of Positions



Max Number of Positions = 24 All Dimensions in Millimeters

TITLE: 5.00mm SPACING, PIN STRIP WITH OPTIONAL PICK AND PLACE COVER

METRIC LIMITS
ONE PLACE ±0.3
TWO PLACES ±0.10
ANGLE ± 1°

SCALE THIS IS A CONFIDENTIAL DRAWING AND MUST BE TREATED AS SUCH. NO DISTRIBUTION IS ALLOWED WITHOUT WRITTEN APPROVAL BY EB ELECTRO INC.



IMPORTANT DISCLAIMER: All information provided on this print is for reference. Always perform your own tests and acquire samples and further information to determine product suitability. While we make effort to provide accurate information, we cannot be responsible for errors either of omission or typographical. EB Electro, Inc. assumes no responsibility for the use or suitability of any product. All products and specifications are subject to change without prior written notice.

DRAWN JM DATE 05/06/08
CHECKED DATE
APPROVED DATE

SIZE A

DRAWING NUMBER: PS5X4-XX-01X

REV. R