

RoHS Compliant

Rev.

ECO#

Date

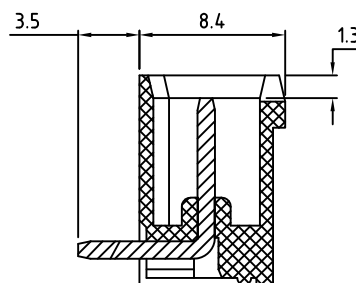
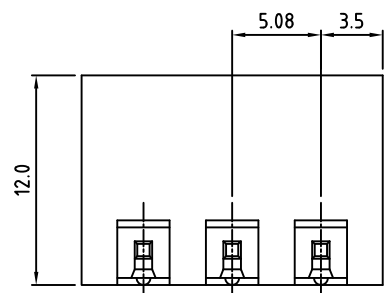
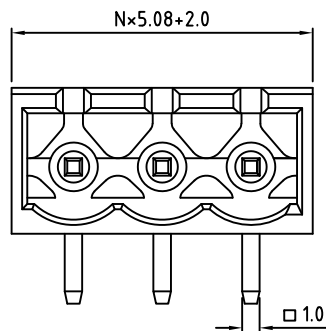
By

B

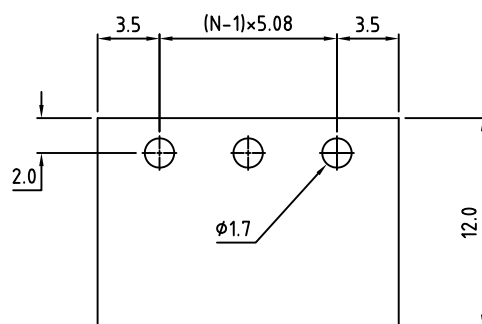
1619-0425

04/17/25

MWP



N=Number of contacts



PCB Layout

Material:

Contact Solder Pin: Copper, Tin Plated

Insulating Body: See P/N Config for Material, UL94V-0 Suitable for Reflow

Electrical

Voltage Rating: 300 VAC

Current rating: 20 AMPS

Withstand Voltage: 1500 VAC, Test time 60 seconds

Mechanical

Operating Temperature: -45°C to +130°C
-49°F to +266°F

Soldering Temperature: 280°C, 500°F for 5 seconds max.

Safety Approval:



Part Number Configuration

HC1508-XX-X0X

Number of
Positions

Color

Plastic/Packaging Option

- | | |
|---------------------|--------------------------------|
| 0 Black (RAL9005) | 0- Standard Plastic, Bulk |
| 2 Red (RAL3001/D) | 1- Hi-temp plastic (LCP), Bulk |
| 3 Orange(RAL2011/P) | ~Black color only |
| 4 Yellow(RAL1018/A) | 2- Standard Plastic, T&R |
| 5 Green(RAL6018/T) | 3- Hi-temp plastic (LCP), T&R |
| 6 Blue (RAL5015/A) | ~Black color only |
| 8 Grey(RAL7004/P) | |
| 9 White(RAL1102) | |

All Dimensions in Millimeters

TITLE: 5.08mm SPACING, PLUGGABLE
CLOSED HORIZONTAL HEADERMETRIC LIMITS
ONE PLACE ±0.3
TWO PLACES ±0.10
ANGLE ± 1°

SCALE

THIS IS A CONFIDENTIAL DRAWING AND
MUSTBE TREATED AS SUCH. NO
DISTRIBUTION IS ALLOWED WITHOUT
WRITTEN APPROVAL BY EBY ELECTRO INC.**Amphenol**
EBY Electro Inc.
PLAINVIEW, NY 11803DRAWN JM
CHECKED
APPROVEDDATE 10/18/11
DATE
DATESIZE
A

DRAWING NUMBER:

HC1508-XX-X0X

REV.

B

IMPORTANT DISCLAIMER: All information provided on this print is for reference. Always perform your own tests and acquire samples and further information to determine product suitability. While we make effort to provide accurate information, we cannot be responsible for errors either of omission or typographical. EBY Electro, Inc. assumes no responsibility for the use or suitability of any product. All products and specifications are subject to change without prior written notice.