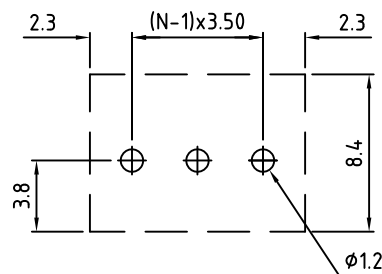


N=Number of Positions



P.C.B. Layout

Material:	
Contact Solder Pin:	Brass, Tin Plated
Wire Guard:	Stainless Steel
Screw:	M2, Steel, Zinc Plated, Phil Slot
Insulating Body:	Polyamide, UL94V-0
Electrical	
Voltage Rating:	125 VAC
Current rating:	10 AMPS
Withstand Voltage:	1500 VAC, Test time 60 sec
Wire Range:	16-26 AWG
Mechanical	
Torque:	2.0 Lbs-in. Max
Operating Temperature:	-40°C to +115°C -40°F to +239°F
Soldering Temperature:	260°C, 500°F for 5 seconds
Safety Approval:	CE

Part Number Configuration.

EB731-XXDS-600

Number of  
Positions

Color  
6-Blue

(Other Color Options Available)  
(Please consult Factory)

Max Number of Positions = 24

UNLESS OTHERWISE SPECIFIED BREAK ALL SHARP EDGES AND DEBURR ALL HOLES

TITLE: 3.50mm SPACING, WIRE GUARD BLOCK ZERO PROTRUSION SOLDER PIN

LIMITS: UNLESS OTHERWISE SPECIFIED HUND.±.02 FRACT.±1/64 THOU.±.005 ANGLE±1°	SCALE	THIS IS A CONFIDENTIAL DRAWING AND MUSTBE TREATED AS SUCH. NO DISTRIBUTION IS ALLOWED WITHOUT WRITTEN APPROVAL BY EBY ELECTRO INC.	<b>EBY</b> Electro Inc. PLAINVIEW, NY 11803
--	-------	--	--

IMPORTANT DISCLAIMER: All information provided on this print is for reference. Always perform your own tests and acquire samples and further information to determine product suitability. While we make effort to provide accurate information, we cannot be responsible for errors either of omission or typographical. EBY Electro, Inc. assumes no responsibility for the use or suitability of any product. All products and specifications are subject to change without prior written notice.

METRIC LIMITS ONE PLACE ±0.3 TWO PLACES ±0.10 ANGLE ±1°	DRAWN <u>  MWP  </u> CHECKED <u>      </u> APPROVED <u>      </u>	DATE <u>06/28/02</u> DATE <u>      </u> DATE <u>      </u>	SIZE <u>  A  </u>	DRAWING NUMBER: <u>EB731-XXDS-600</u>	REV. <u>      </u>
--	---	--	-------------------	--	--------------------