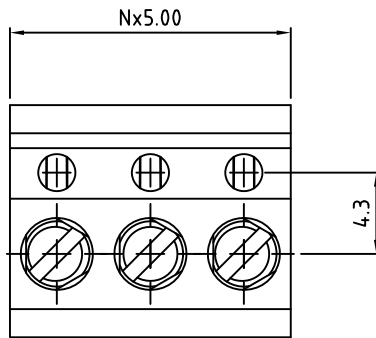
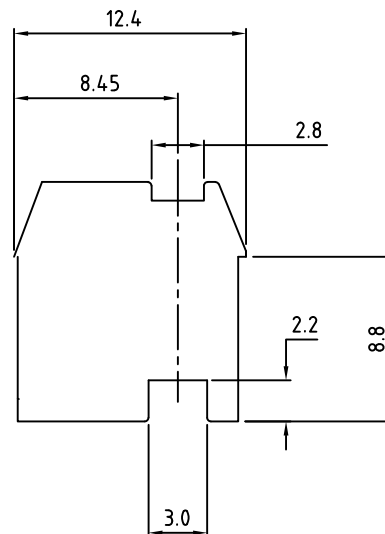
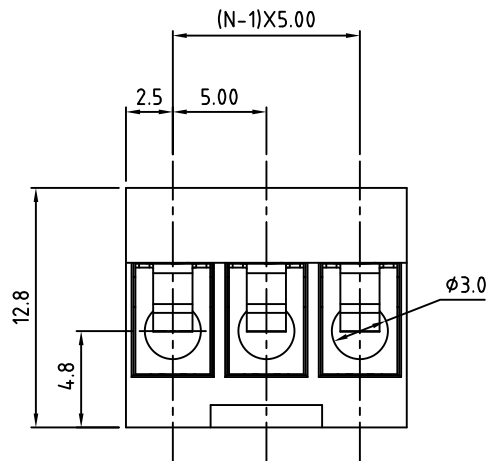


RoHS Compliant

Rev.	ECO#	Date	By
C	1372-0520	05/11/20	MWP



N=Number of Positions



Material:	
Contact Block:	Brass, Ni Plated
Wire Guard:	PhBz, Tin Plated
Terminal Screw:	M3, Steel, Zinc Plated, "-" slotted
Insulating Body:	PA66, UL94V-0
Electrical	
Voltage Rating:	300 VAC
Current rating:	10 AMPS
Wire Range:	12-26 AWG
Withstand Voltage:	1600 VAC, Test time 60 seconds
Mechanical	
Wire Strip Legnth:	6-7mm
Torque:	3.5 lbs-in Max
Operating Temperature:	-40°C to +115°C -40°F to +239°F
Safety Approval:	UL US

Part Number Configuration.

EB560-XXDS-X00

Number of
Positions

Color Options:
0-Black
3-Orange
5-Green
6-Blue

(Other Color Options Available)
(Please consult Factory)

Max Number of Positions = 24

UNLESS OTHERWISE
SPECIFIED BREAK ALL
SHARP EDGES AND
DEBURR ALL HOLES

TITLE:

5.00mm SPACING, PLUGGABLE BLOCK

LIMITS: UNLESS
OTHERWISE SPECIFIED
HUND.±.02 FRACT.±1/64
THOU.±.005 ANGLE±1°

SCALE

THIS IS A CONFIDENTIAL DRAWING AND
MUSTBE TREATED AS SUCH. NO
DISTRIBUTION IS ALLOWED WITHOUT
WRITTEN APPROVAL BY EBY ELECTRO INC.

EBY Electro Inc.
PLAINVIEW, NY 11803

IMPORTANT DISCLAIMER: All information provided on this print is for reference. Always perform your own tests and acquire samples and further information to determine product suitability. While we make effort to provide accurate information, we cannot be responsible for errors either of omission or typographical. EBY Electro, Inc. assumes no responsibility for the use or suitability of any product. All products and specifications are subject to change without prior written notice.

METRIC LIMITS
ONE PLACE ±0.3
TWO PLACES ±0.10
ANGLE ±1°

DRAWN MWP
CHECKED
APPROVED

DATE 08/15/05
DATE
DATE

SIZE
A

DRAWING NUMBER:
EB560-XXDS-X00

REV.
C