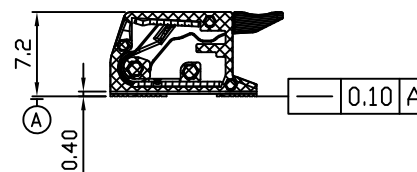
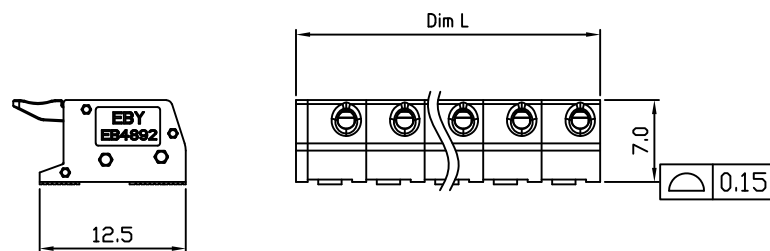
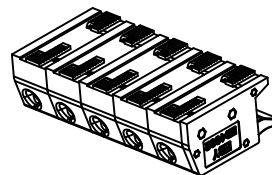
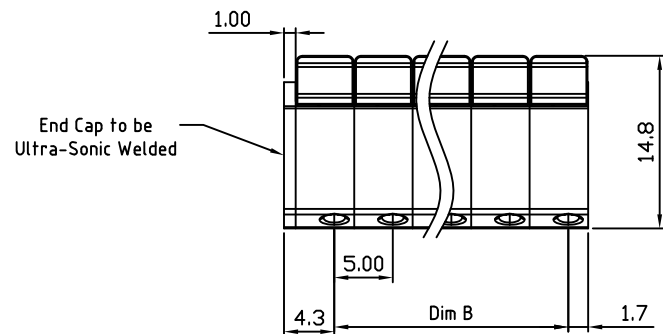


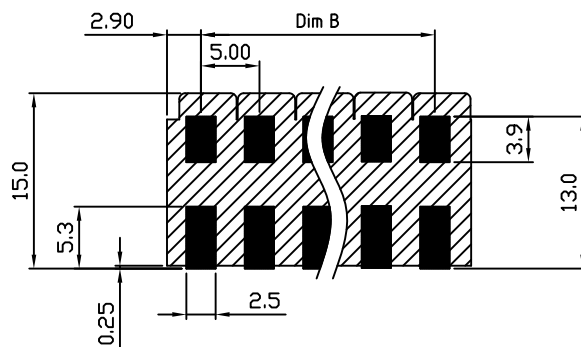
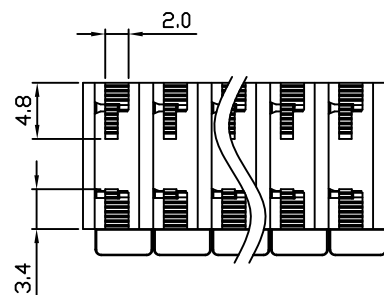
RoHS Compliant

Rev.	ECO#	Date	By
B	1415-0920	09/30/20	MWP

Material:	
Contact:	Brass, Tin Plated
Wire Retention Spring:	Stainless Steel
Insulating Body:	Polyamide PA6T, UL94V-0
Push Button:	PA6, 20% GF, UL94V-0
Electrical	
Voltage Rating:	300 VAC
Current rating:	7 AMPS
Wire Range:	16-24 AWG
Mechanical	
Operating Temperature:	-40°C to +115°C -40°F to +239°F



Dim.L=P×5.0+1.0 Dim.B=(P-1)×5.0 P= number of poles(2-12p)		
	Dim B	Dim L
0-30mm	±0.15	±0.20
over 30mm-60mm	±0.20	±0.25
over 60mm-90mm	±0.25	±0.30
over 90mm	±0.30	±0.40



PCB LAYOUT

Part Number Configuration.

EB4892-XX-00X

Number of Positions  
Color 0-Black  
Packaging Options  
0-Bulk  
1-Tape and Reel

Max Number of Positions = 24

TITLE: 5.00mm SPACING, MODULAR, PLUGGABLE

LIMITS: UNLESS OTHERWISE SPECIFIED HUND.±02 FRACT.±1/64 THOU.±005 ANGLE±1°	SCALE	THIS IS A CONFIDENTIAL DRAWING AND MUSTBE TREATED AS SUCH. NO DISTRIBUTION IS ALLOWED WITHOUT WRITTEN APPROVAL BY EBY ELECTRO INC.	EBY Electro Inc. PLAINVIEW, NY 11803
--	-------	--	---

IMPORTANT DISCLAIMER: All information provided on this print is for reference. Always perform your own tests and acquire samples and further information to determine product suitability. While we make effort to provide accurate information, we cannot be responsible for errors either of omission or typographical. EBY Electro, Inc. assumes no responsibility for the use or suitability of any product. All products and specifications are subject to change without prior written notice.

METRIC LIMITS ONE PLACE ±0.3 TWO PLACES ±0.10 ANGLE ±1°	DRAWN MWP CHECKED APPROVED	DATE 01/25/19 DATE DATE	SIZE A	DRAWING NUMBER: EB4892-XX-00X	REV. B
--	----------------------------------	-------------------------------	-----------	----------------------------------	-----------