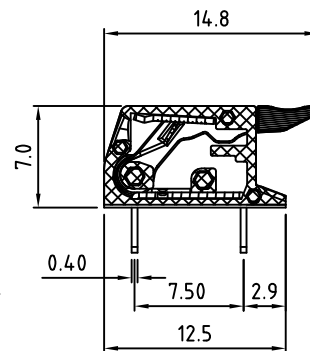
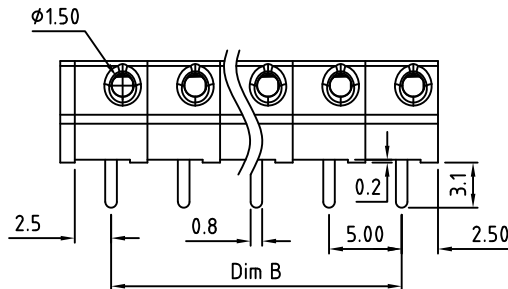
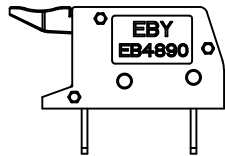
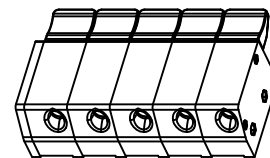


Rounded Button

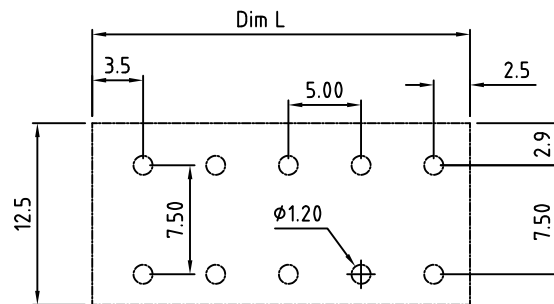
Material:	
Contact:	Brass, Tin Plated
Wire Retention Spring:	Stainless Steel
Insulating Body:	PA6T, 20% GF, UL94V-0
Push Button:	PA6T, 20% GF, UL94V-0
Electrical	
Voltage Rating:	300 VAC
Current rating:	7 AMPS
Wire Range:	16-24 AWG
Mechanical	
Operating Temperature:	-40°C to +115°C -40°F to +239°F
Soldering Temperature:	260°C, 500°F for 5 seconds



Dim.L=Px5.0+1.0 Dim.B=(P-1)x5.0 P= number of poles(2-12p)		
Tolerance:	Dim B	Dim L
0-30mm	±0.15	±0.20
over 30mm-60mm	±0.20	±0.25
over 60mm-90mm	±0.25	±0.30
over 90mm	±0.30	±0.40



Straight Button



PCB Layout

Part Number Configuration.

EB4890-XX-0XX

Number of Positions	Color	Button Options	Packaging Options
0-Black 8-Gray 9-White	0-Straight 1-Rounded	0-Bulk 1-Tape and Reel	

Max Number of Positions = 24

TITLE:
5.00mm SPACING, MODULAR, PLUGGABLE

LIMITS: UNLESS OTHERWISE SPECIFIED	SCALE	THIS IS A CONFIDENTIAL DRAWING AND MUSTBE TREATED AS SUCH. NO DISTRIBUTION IS ALLOWED WITHOUT WRITTEN APPROVAL BY EBY ELECTRO INC.	EBY Electro Inc. PLAINVIEW, NY 11803
HUND. ±0.2 TWO PLACES ±0.10 THOU. ±0.05	ONE PLACE ±0.3 FRACT. ±1/64 ANGLE ±1°		

IMPORTANT DISCLAIMER: All information provided on this print is for reference. Always perform your own tests and acquire samples and further information to determine product suitability. While we make effort to provide accurate information, we cannot be responsible for errors either of omission or typographical. EBY Electro, Inc. assumes no responsibility for the use or suitability of any product. All products and specifications are subject to change without prior written notice.

METRIC LIMITS	DRAWN	DATE	SIZE	DRAWING NUMBER:	REV.
ONE PLACE ±0.3 TWO PLACES ±0.10 THOU. ±0.05	AJT	06/02/15	A	EB4890-XX-0XX	G