

RoHS Compliant

Rev.

ECO#

Date

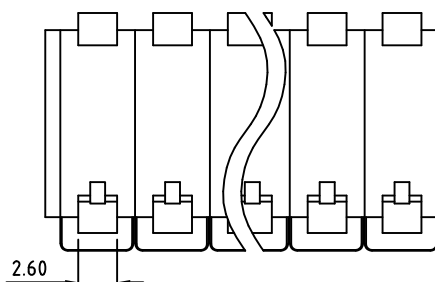
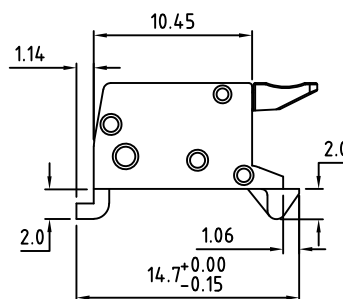
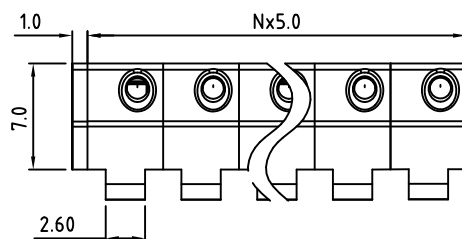
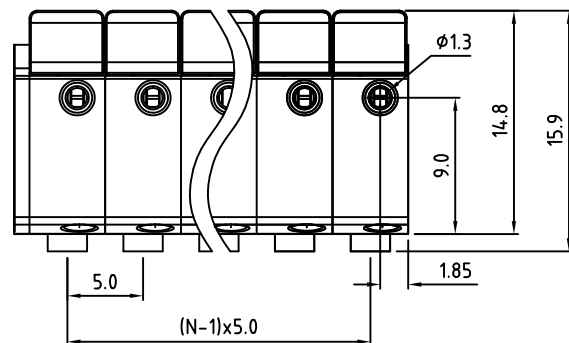
By

I

1617-0425

04/14/25

MWP



NOTES:

1. Mates with a $\phi 1.1\text{mm}$ pin
2. Contact pinch point for mating pin is 2.5mm below top surface of the terminal block
3. Mating pin should be min 1.0mm beyond contact pinch point

Material:

Contact Block: Brass, Tin Plated

Wire Retention Spring: Stainless Steel

Insulating Body: Polyamide PA66, UL94V-0

Electrical

Voltage Rating: 300 VAC

Contact Resistance: $< 5\text{m}\Omega$ Current rating: 7 AMPS, Solid Wire
5 AMPS, Stranded WireWire Range: Solid: 18-22 AWG
Stranded: 20-22 AWG

Mechanical

Operating Temperature: -40°C to $+115^{\circ}\text{C}$
 -40°F to $+239^{\circ}\text{F}$ Safety Approval:  US

Part Number Configuration.

EB4885-XX-X00

Number of Positions
Color Option
0-Black
8-Grey(Other Color Options Available)
(Please consult Factory)

Max Number of Positions = 24

All Dimensions in Millimeters

TITLE: 5.00mm SPACING, MODULAR, PLUGGABLE

METRIC LIMITS
ONE PLACE ± 0.3
TWO PLACES ± 0.10
ANGLE $\pm 1^{\circ}$

SCALE

THIS IS A CONFIDENTIAL DRAWING AND
MUST BE TREATED AS SUCH. NO
DISTRIBUTION IS ALLOWED WITHOUT
WRITTEN APPROVAL BY EBY ELECTRO INC.

Amphenol


Electro Inc.
PLAINVIEW, NY 11803DRAWN MWP
CHECKED
APPROVEDDATE 07/03/13
DATE
DATESIZE
A

DRAWING NUMBER:

EB4885-XX-X00

REV.

I

IMPORTANT DISCLAIMER: All information provided on this print is for reference. Always perform your own tests and acquire samples and further information to determine product suitability. While we make effort to provide accurate information, we cannot be responsible for errors either of omission or typographical. EBY Electro, Inc. assumes no responsibility for the use or suitability of any product. All products and specifications are subject to change without prior written notice.