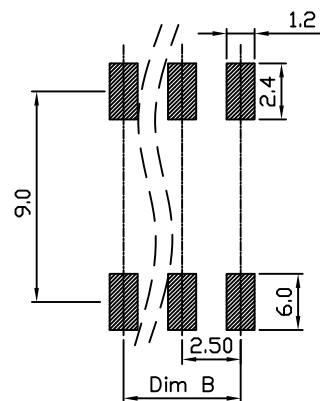
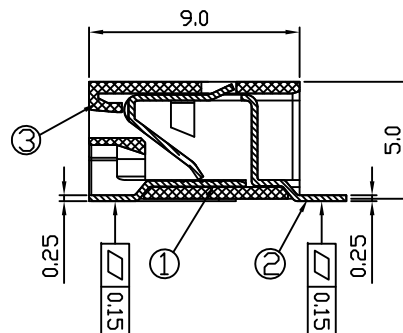
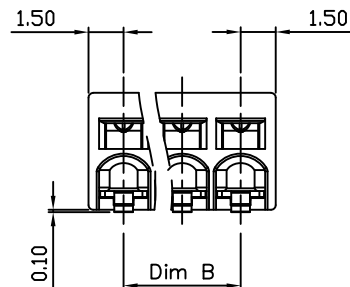


Dim.A	$(N-1) \times 2.5 + 3.0$
Dim.B	$(N-1) \times 2.5$

N=Number of poles

POLES	TOLERANCE
2P - 7P	-0.15/+0.15
8P - 13P	-0.20/+0.20
14P - 20P	-0.30/+0.30



Material:	
① Short Contact:	Brass, Tin Plated
② Long Contact:	PhBz, Tin Plated
③ Insulating Body:	Polyamide, UL94V-0, High Temp
Electrical	
Voltage Rating:	150 VAC
Current rating:	5 AMPS
Wire Range:	18 - 26AWG
Withstand Voltage:	2500 VAC, Test time 60 sec
Mechanical	
Operating Temperature:	-45°C to +65°C -49°F to +149°F
Soldering Temperature:	280°C, 536°F for 10 seconds max.
Safety Approval:	

UNLESS OTHERWISE SPECIFIED BREAK ALL SHARP EDGES AND DEBURR ALL HOLES

TITLE:

2.50mm SURFACE MOUNT

LIMITS: UNLESS OTHERWISE SPECIFIED  
HUND.±02 FRACT.±1/64  
THOU.±005 ANGLE±1°

SCALE

THIS IS A CONFIDENTIAL DRAWING AND MUSTBE TREATED AS SUCH. NO DISTRIBUTION IS ALLOWED WITHOUT WRITTEN APPROVAL BY EBY ELECTRO INC.

**EBY** Electro Inc.  
PLAINVIEW, NY 11803

IMPORTANT DISCLAIMER: All information provided on this print is for reference. Always perform your own tests and acquire samples and further information to determine product suitability. While we make effort to provide accurate information, we cannot be responsible for errors either of omission or typographical. EBY Electro, Inc. assumes no responsibility for the use or suitability of any product. All products and specifications are subject to change without prior written notice.

METRIC LIMITS  
ONE PLACE ±0.3  
TWO PLACES ±0.10  
ANGLE ±1°

DRAWN AJT  
CHECKED    
APPROVED  

DATE 10/16/14  
DATE    
DATE  

SIZE  
A

DRAWING NUMBER:  
EB4601-XX-000

REV.