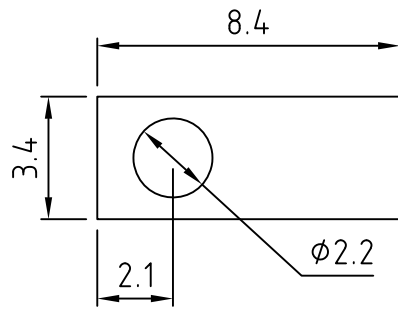
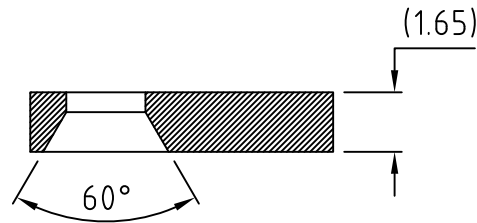
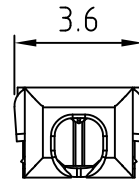
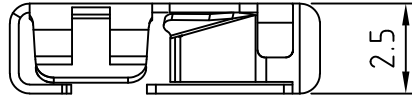
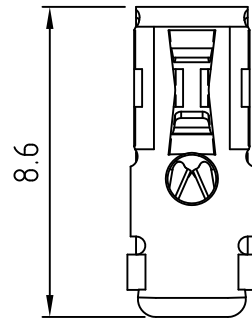


RoHS Compliant

Rev.	EC0#	Date	By



Recommended P.C.B. Layout

Material:	
Contact:	Copper, Tin Plated
Electrical	
Voltage Rating:	320 VAC
Current rating:	6 Amp
Wire Range Horizontal:	20-24 AWG, Solid or Stranded
Wire Range Vertical:	20 AWG, Solid
Wire Strip Length:	8-9mm
Mechanical	
Operating Temperature:	-40°C to +150°C -40°F to +302°F

Note:

Suitable for lead free reflow soldering process up to temperatures of 260°C.

Wire strip Length: 8-9mm

Packaging: Tape and Reel with 13" Reel

UNLESS OTHERWISE SPECIFIED BREAK ALL SHARP EDGES AND DEBURR ALL HOLES

TITLE: LED-SMD, Without Housing.

LIMITS: UNLESS OTHERWISE SPECIFIED
 HUND. ±0.02 FRACT. ±1/64
 THOU. ±0.005 ANGLE ±1°

SCALE THIS IS A CONFIDENTIAL DRAWING AND MUST BE TREATED AS SUCH. NO DISTRIBUTION IS ALLOWED WITHOUT WRITTEN APPROVAL BY EBY ELECTRO INC.



IMPORTANT DISCLAIMER: All information provided on this print is for reference. Always perform your own tests and acquire samples and further information to determine product suitability. While we make effort to provide accurate information, we cannot be responsible for errors either of omission or typographical. EBY Electro, Inc. assumes no responsibility for the use or suitability of any product. All products and specifications are subject to change without prior written notice.

METRIC LIMITS	DRAWN <u> MWP </u>	DATE <u>06/28/18</u>	SIZE	DRAWING NUMBER:	REV.
ONE PLACE ±0.3	CHECKED <u> </u>	DATE <u> </u>	A	EB3400-01-BLANK	
TWO PLACES ±0.10	APPROVED <u> </u>	DATE <u> </u>			
ANGLE ±1°					