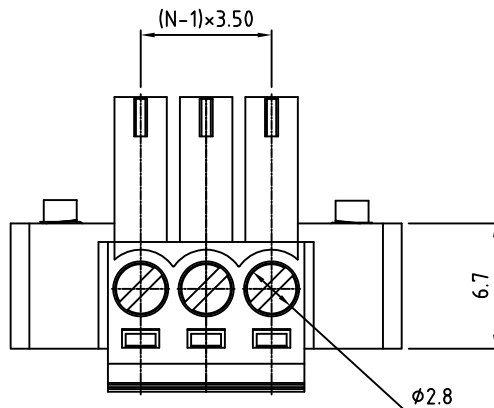
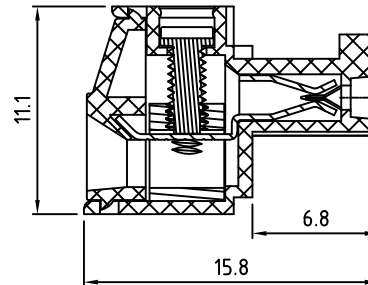
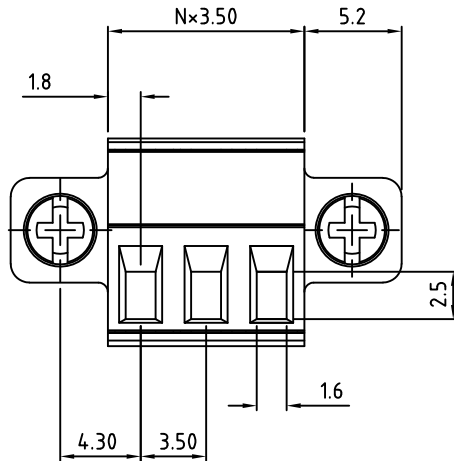


N=Number of Positions



| Material: | |
|------------------------|-------------------------------------|
| Contact Block: | Brass, 160-240µ" Nickel Plated |
| Contact Clip: | PhBz, Tin Plated |
| Screw: | M2, Steel, Zinc Plated, "-" slotted |
| Flange Screw: | M2.5, Steel, Zinc Plated, phil-slot |
| Insulating Body: | Thermoplastic, UL94 V-0 |
| Electrical | |
| Voltage Rating: | 300 VAC |
| Current rating: | 10 AMPS |
| Withstand Voltage: | 1500 VAC, Test time 60 sec |
| Wire Range: | 16-28 AWG |
| Mechanical | |
| Torque: | 3.0 lbs-in. |
| Operating Temperature: | -40°C to +105°C -40°F to +221°F |
| Safety Approval: | CE US |

Part Number Configuration.

EB1350M-XX-600

Number of Positions 6-Blue

(Other Color Options Available)
(Please consult Factory)

Max Number of Positions = 24

| | | |
|--|--|--|
| UNLESS OTHERWISE SPECIFIED BREAK ALL SHARP EDGES AND DEBURR ALL HOLES | TITLE: 3.50mm SPACING, PLUGGABLE BLOCK MOUNTABLE | |
| | SCALE | THIS IS A CONFIDENTIAL DRAWING AND MUSTBE TREATED AS SUCH. NO DISTRIBUTION IS ALLOWED WITHOUT WRITTEN APPROVAL BY EBY ELECTRO INC. |
| LIMITS: UNLESS OTHERWISE SPECIFIED HUND.±.02 FRACT.±1/64 THOU.±.005 ANGLE±1° | DRAWN MWP CHECKED APPROVED | DATE 10/11/02 DATE DATE |
| DRAWING NUMBER: EB1350M-XX-600 | | REV. H |

IMPORTANT DISCLAIMER: All information provided on this print is for reference. Always perform your own tests and acquire samples and further information to determine product suitability. While we make effort to provide accurate information, we cannot be responsible for errors either of omission or typographical. EBY Electro, Inc. assumes no responsibility for the use or suitability of any product. All products and specifications are subject to change without prior written notice.

METRIC LIMITS
ONE PLACE ±0.3
TWO PLACES ±0.10
ANGLE ±1°

DRAWN MWP
CHECKED
APPROVED

DATE 10/11/02
DATE
DATE

SIZE
A

DRAWING NUMBER: EB1350M-XX-600
REV. H