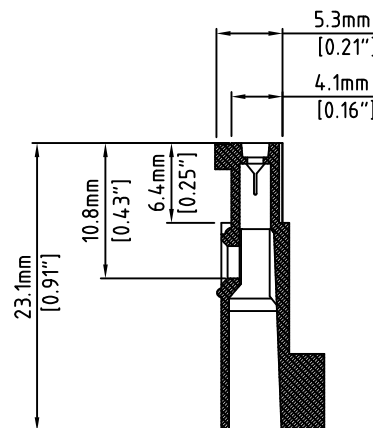
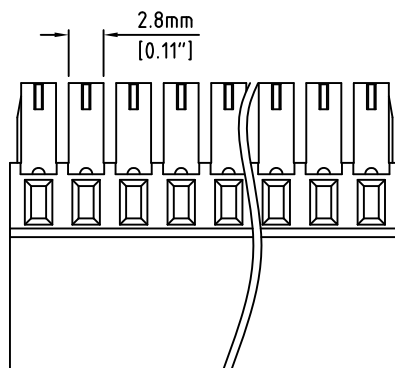


N=Number of Positions



Material:

Contact Pin: Brass, Tin Plated

Insulating Body: Polyamide, UL94V-0, Green

Electrical

Voltage Rating: 300 VAC

Current rating: 20 AMPS

Withstand Voltage: 1500 VAC, Test time 60 seconds

Mechanical

Operating Temperature: -40°C to +105°C
-40°F to +221°F

Safety Approval: US

Part Number Configuration.

EB1344-XX-500

Number of Positions: XX
Color: 5-Green

(Other Color Options Available)
(Please consult Factory)

Max Number of Positions = 24

UNLESS OTHERWISE SPECIFIED BREAK ALL SHARP EDGES AND DEBURR ALL HOLES

TITLE: 3.81mm SPACING
SCREWLESS PLUGGABLE BLOCK

LIMITS: UNLESS OTHERWISE SPECIFIED
HUND.±.02 FRACT.±1/64
THOU.±.005 ANGLE±1°

SCALE THIS IS A CONFIDENTIAL DRAWING AND MUSTBE TREATED AS SUCH. NO DISTRIBUTION IS ALLOWED WITHOUT WRITTEN APPROVAL BY EBY ELECTRO INC.

EBY Electro Inc.
PLAINVIEW, NY 11803

IMPORTANT DISCLAIMER: All information provided on this print is for reference. Always perform your own tests and acquire samples and further information to determine product suitability. While we make effort to provide accurate information, we cannot be responsible for errors either of omission or typographical. EBY Electro, Inc. assumes no responsibility for the use or suitability of any product. All products and specifications are subject to change without prior written notice.

METRIC LIMITS
ONE PLACE ±0.3
TWO PLACES ±0.10
ANGLE ±1°

DRAWN JM
CHECKED
APPROVED

DATE 01/13/09
DATE
DATE

SIZE
A

DRAWING NUMBER:
EB1344-XX-500

REV.