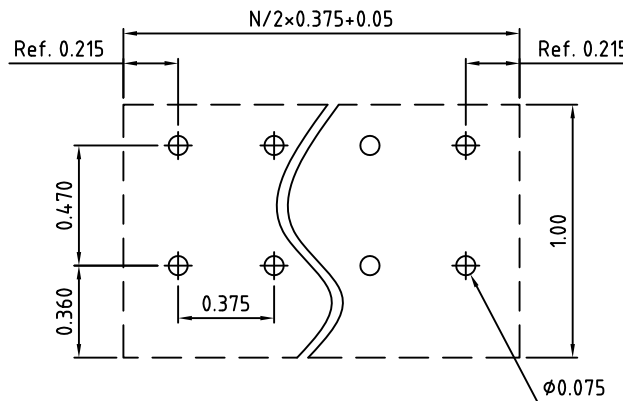
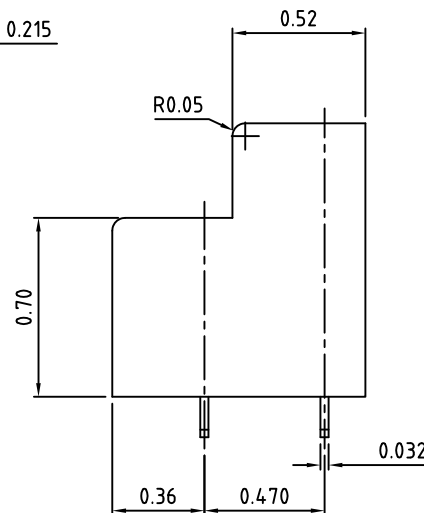
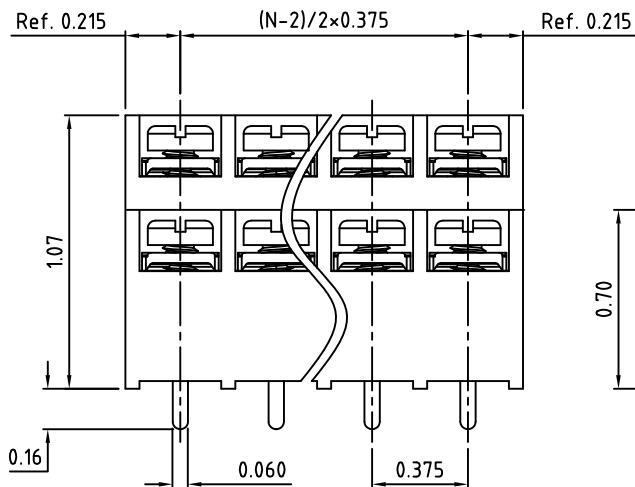


N = Number of Positions



P.C.B Layout



Part Number Configuration

86XX-XX-X-XX-XXXX

Terminal Options (Page 2) Number of Positions Mounting Options (Page 2) Screw Options (Page 2) Not Required

Additional Hardware & Printing Options
For Custom Options Please
Consult our Factory, or refer
to our online Printing and
Hardware Page

Max Number of Positions = 10 Positions x 2 Rows = 20

Page 1 of 2

UNLESS OTHERWISE SPECIFIED BREAK ALL SHARP EDGES AND DEBURR ALL HOLES

TITLE: 0.375" SPACING, BARRIER BLOCK
DUAL LEVEL, PARALLEL CONTACT PINS

LIMITS: UNLESS OTHERWISE SPECIFIED
HUND. ± 0.02 FRACT. ± 1/64
THOU. ± 0.005 ANGLE ± 1°

SCALE THIS IS A CONFIDENTIAL DRAWING AND MUSTBE TREATED AS SUCH. NO DISTRIBUTION IS ALLOWED WITHOUT WRITTEN APPROVAL BY EBY ELECTRO INC.

EBY Electro Inc.
PLAINVIEW, NY 11803

IMPORTANT DISCLAIMER: All information provided on this print is for reference. Always perform your own tests and acquire samples and further information to determine product suitability. While we make effort to provide accurate information, we cannot be responsible for errors either of omission or typographical. EBY Electro, Inc. assumes no responsibility for the use or suitability of any product. All products and specifications are subject to change without prior written notice.

METRIC LIMITS
ONE PLACE ± 0.3
TWO PLACES ± 0.10
ANGLE ± 1°

DRAWN JM
CHECKED
APPROVED

DATE 10/25/10
DATE
DATE

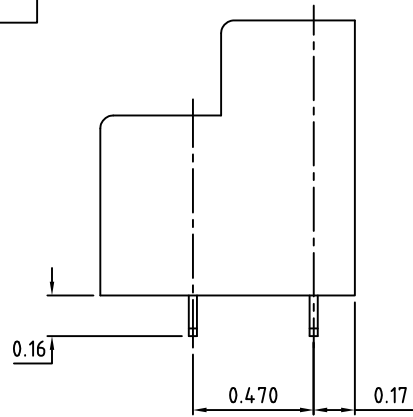
SIZE
A

DRAWING NUMBER:

8600-0001 REV.

Terminal Options

02 - PC

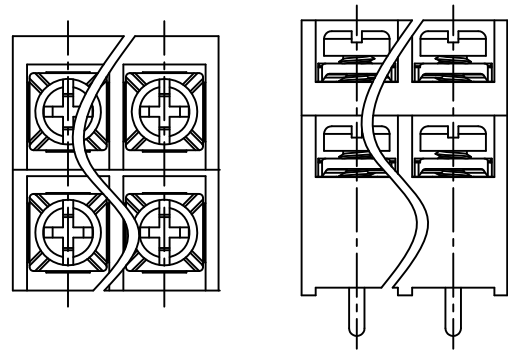


Available Screw Options

- 00 - No Screws
- 01 - Steel, Zinc Plated,
- 02 - Steel, Zinc plated, w/ Washer
- 03 - Brass, Nickel Plated
- 04 - Brass, Nickel Plated, w/ Washer
- 12 - Steel, Zinc Plated, Captive, w/ Washer
- 14 - Brass, Nickel Plated, Captive, w/ Washer
- 22 - Steel, Zinc Plated, Captive, Wire Ready, w/ Washer
- 24 - Brass, Nickel Plated, Captive, Wire Ready, w/ Washer

Mounting Options

N - No Mounting



UNLESS OTHERWISE SPECIFIED BREAK ALL SHARP EDGES AND DEBURR ALL HOLES		TITLE: 0.375" SPACING, BARRIER BLOCK DUAL LEVEL, PARALLEL CONTACT PINS	
LIMITS: UNLESS OTHERWISE SPECIFIED HUND.±.02 FRACT.±1/64 THOU.±.005 ANGLE±1°		SCALE	THIS IS A CONFIDENTIAL DRAWING AND MUSTBE TREATED AS SUCH. NO DISTRIBUTION IS ALLOWED WITHOUT WRITTEN APPROVAL BY EBY ELECTRO INC.
DRAWN <u>JM</u> CHECKED <u> </u> APPROVED <u> </u>		DATE <u>10/25/10</u> DATE <u> </u> DATE <u> </u>	SIZE <u>A</u> DRAWING NUMBER: <u>8600-0002</u> REV. <u> </u>

IMPORTANT DISCLAIMER: All information provided on this print is for reference. Always perform your own tests and acquire samples and further information to determine product suitability. While we make effort to provide accurate information, we cannot be responsible for errors either of omission or typographical. EBY Electro, Inc. assumes no responsibility for the use or suitability of any product. All products and specifications are subject to change without prior written notice.