

RoHS Compliant

Rev.

E

ECO#

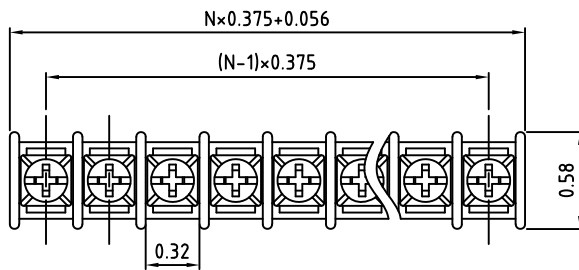
1606-0225

Date

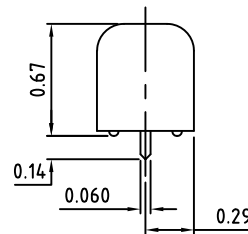
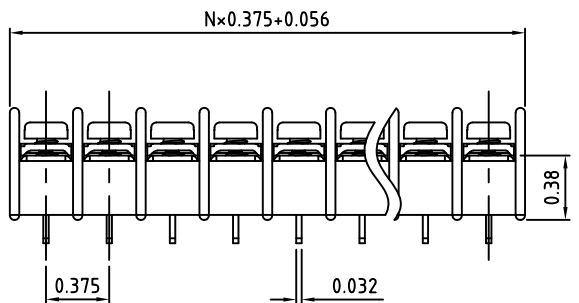
02/04/25

By

MWP



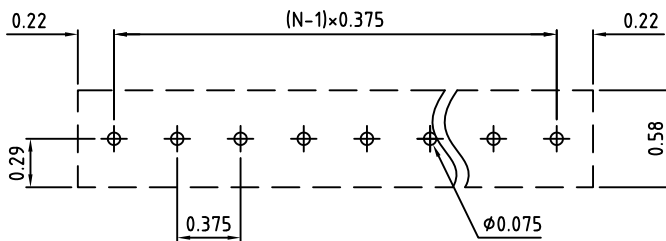
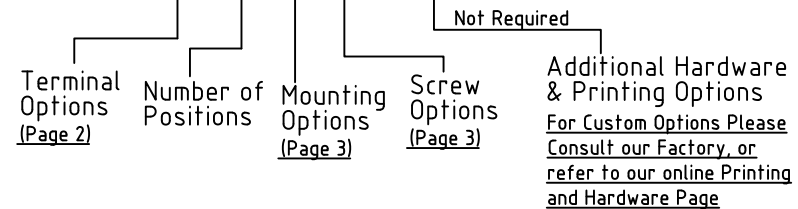
N=Number of Positions



Material:	
Contact Solder Pin:	Brass, Tin Plated
Insulating Body:	Polycarbonate, UL94V-0, Black
Terminal Screw:	See Page 3
Electrical	
Voltage Rating:	300 VAC
Current rating:	20 AMPS
Wire Range:	12-24 AWG
Mechanical	
Torque:	10.0 lbs-in. Max.
Operating Temperature:	-40°C to +130°C -40°F to +266°F
Soldering Temperature:	260°C, 500°F for 5 seconds max.
Safety Approval:	CE US

## Part Number Configuration.

60XX-XX-X-XX-XXXX



Recommended PCB Layout

Max Number of Positions = 28

All Dimensions in Inches

Page 1 of 3

TITLE: 0.375" SPACING, BARRIER BLOCK

Tolerance:  
HUND. ± 0.02  
THOU. ± 0.000  
FRACT. ± 0.001  
ANGLE ± 1°

SCALE

THIS IS A CONFIDENTIAL DRAWING AND  
MUST BE TREATED AS SUCH. NO  
DISTRIBUTION IS ALLOWED WITHOUT  
WRITTEN APPROVAL BY EBY ELECTRO INC.

**Amphenol**  
**EBY** Electro Inc.  
PLAINVIEW, NY 11803

IMPORTANT DISCLAIMER: All information provided on this print is for reference. Always perform your own tests and acquire samples and further information to determine product suitability. While we make effort to provide accurate information, we cannot be responsible for errors either of omission or typographical. EBY Electro, Inc. assumes no responsibility for the use or suitability of any product. All products and specifications are subject to change without prior written notice.

DRAWN JM  
CHECKED DATE 07/12/10  
APPROVED DATE

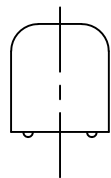
SIZE  
A

DRAWING NUMBER:  
6000-0001

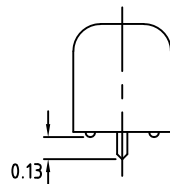
REV.  
E

RoHS Compliant	Rev.	ECO#	Date	By
	E	1606-0225	02/04/25	MWP

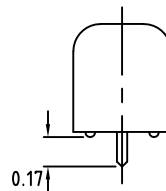
01 - Chassis Mount



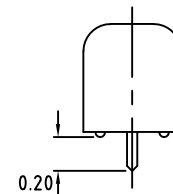
02 - Zero Trim PC



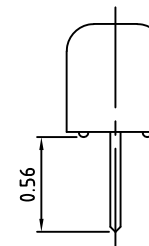
03 - Short PC



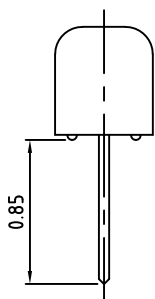
04 - PC



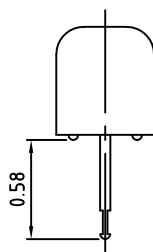
11 - Wire Wrap



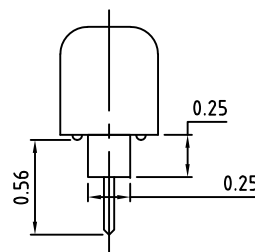
12 - Extended Wire Wrap



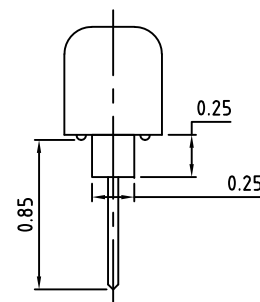
15 - Solder Turret



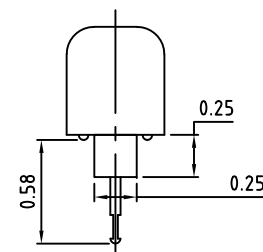
21 - Insulated PC



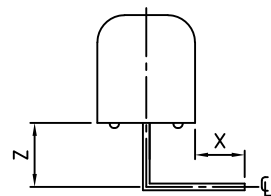
22 - Extended Insulated PC



23 - Insulated Solder Turret




33 - Right Angle



Code	"X" Min	"Z" ±0.04	EBY Electro offers a wide selection of standard and custom right angle bends for single row PCB mounted terminal blocks. If the exact bend you require is not shown, contact us. Our unique right Angle Manufacturing Process allows any type of bend for the same price as a standard bend. we will give you exactly what you need, the first time and every time.
RA02	0.10"	0.19"	
RA04	0.15"	0.14"	
RA06	0.20"	0.09"	
RA08	0.10"	0.48"	
RA10	0.15"	0.43"	
RA12	0.20"	0.38"	

Terminal  
Options

TITLE: Part Number Configuration for 6000 Series

Tolerance: HUND.±.02 THOU.±.000 FRACT.± ANGLE±1°	SCALE	THIS IS A CONFIDENTIAL DRAWING AND MUSTBE TREATED AS SUCH. NO DISTRIBUTION IS ALLOWED WITHOUT WRITTEN APPROVAL BY EBY ELECTRO INC.	<b>Amphenol</b>  PLAINVIEW, NY 11803		
DRAWN JM	DATE 07/12/10	SIZE A	DRAWING NUMBER: 6000-0002	REV. E	
CHECKED	DATE				
APPROVED	DATE				

IMPORTANT DISCLAIMER: All information provided on this print is for reference. Always perform your own tests and acquire samples and further information to determine product suitability. While we make effort to provide accurate information, we cannot be responsible for errors either of omission or typographical. EBY Electro, Inc. assumes no responsibility for the use or suitability of any product. All products and specifications are subject to change without prior written notice.

RoHS Compliant

Rev.

ECO#

Date

By

E

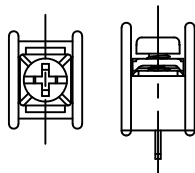
1606-0225

02/04/25

MWP

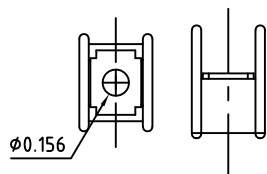
# Mounting Options

N - No Mounting Ends

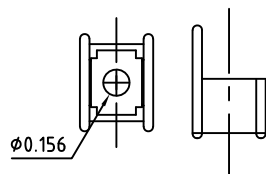


# Available Screw Options

W -  $\phi 0.156$ " Mounting Plate with End Barriers



C -  $\phi 0.156$ " Mounting Plate without End Barriers



00 - No Screws

01 - Steel, Zinc Plated

02 - Steel, Zinc Plated, w/ Washer

03 - Brass, Nickel Plated

04 - Brass, Nickel Plated, w/ Washer

05 - Stainless Steel, Phillips Head

11 - Steel, Zinc Plated, Captive

12 - Steel, Zinc Plated, Captive, w/ Washer

13 - Brass, Nickel Plated, Captive

14 - Brass, Nickel Plated, Captive, w/ Washer

21 - Steel, Zinc Plated, Captive, Wire Ready

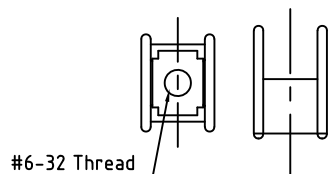
22 - Steel, Zinc Plated, Captive, Wire Ready, w/ Washer

23 - Brass, Nickel Plated, Captive, Wire Ready

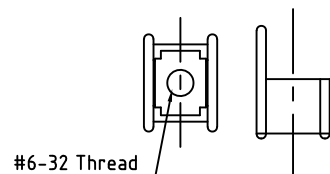
24 - Brass, Nickel Plated, Captive, Wire Ready, w/ Washer

46 - Steel, Zinc Plated, Thread Interrupt, Wire Ready, w/ Washer

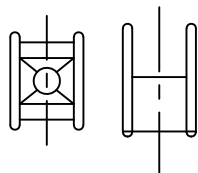
M - #6-32 Mounting Plate with End Barriers



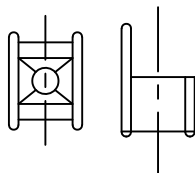
I - #6-32 Mounting Plate without End Barriers



H - No Mounting Plate with End Barriers



K - No Mounting Plate without End Barriers



All Dimensions in Inches

Page 3 of 3

TITLE: Part Number Configuration for 6000 Series

Tolerance:  
HUND. $\pm 0.02$   
THOU. $\pm 0.000$   
FRACT. $\pm \frac{1}{32}$   
ANGLE $\pm 1^\circ$

SCALE

THIS IS A CONFIDENTIAL DRAWING AND  
MUST BE TREATED AS SUCH. NO  
DISTRIBUTION IS ALLOWED WITHOUT  
WRITTEN APPROVAL BY EBY ELECTRO INC.

**Amphenol**

**EBY** Electro Inc.  
PLAINVIEW, NY 11803

DRAWN JM  
CHECKED \_\_\_\_\_  
APPROVED \_\_\_\_\_

DATE 07/12/10  
DATE \_\_\_\_\_  
DATE \_\_\_\_\_

SIZE  
A

DRAWING NUMBER:

6000-0003

REV.  
E

IMPORTANT DISCLAIMER: All information provided on this print is for reference. Always perform your own tests and acquire samples and further information to determine product suitability. While we make effort to provide accurate information, we cannot be responsible for errors either of omission or typographical. EBY Electro, Inc. assumes no responsibility for the use or suitability of any product. All products and specifications are subject to change without prior written notice.