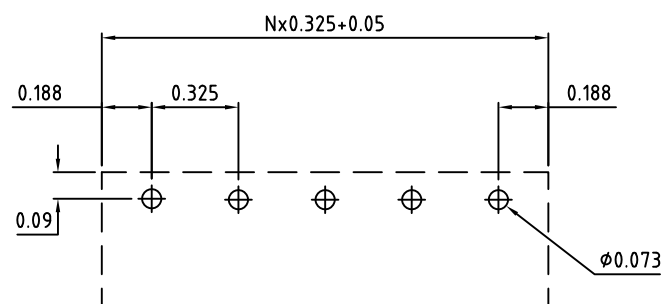


N=Number of Positions

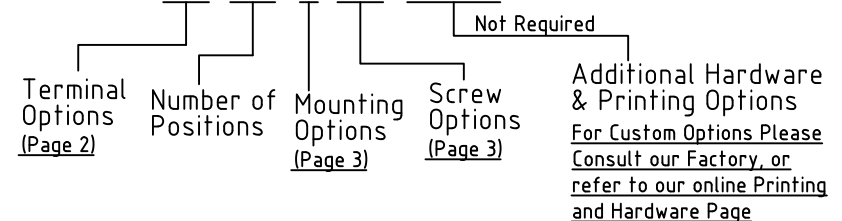


P.C.B. Layout

Material:	
Contact Solder Pin:	Brass, Tin Plated
Terminal Screw:	#6-32, Phil Slot
Insulating Body:	Polycarbonate, UL94V-0, Black
Electrical	
Voltage Rating:	300 VAC
Current rating:	20 AMPS
Wire Range:	12-26 AWG
Mechanical	
Torque:	10 lbs-in Max.
Operating Temperature:	-40°C to +105°C -40°F to +221°F
Soldering Temperature:	260°C, 500°F for 5 seconds max.
Safety Approval:	UL US

### Part Number Configuration.

50XX-XX-X-XX-XXXX



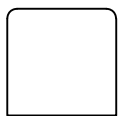
Max Number of Positions = 26

UNLESS OTHERWISE SPECIFIED BREAK ALL SHARP EDGES AND DEBURR ALL HOLES	TITLE: 0.325" SPACING, BARRIER BLOCK			
	<table border="1"> <tr> <td>LIMITS: UNLESS OTHERWISE SPECIFIED HUND.±.02 FRACT.±1/64 THOU.±.005 ANGLE±1°</td> <td>SCALE THIS IS A CONFIDENTIAL DRAWING AND MUSTBE TREATED AS SUCH. NO DISTRIBUTION IS ALLOWED WITHOUT WRITTEN APPROVAL BY EBY ELECTRO INC.</td> <td>  PLAINVIEW, NY 11803 </td> </tr> </table>	LIMITS: UNLESS OTHERWISE SPECIFIED HUND.±.02 FRACT.±1/64 THOU.±.005 ANGLE±1°	SCALE THIS IS A CONFIDENTIAL DRAWING AND MUSTBE TREATED AS SUCH. NO DISTRIBUTION IS ALLOWED WITHOUT WRITTEN APPROVAL BY EBY ELECTRO INC.	 PLAINVIEW, NY 11803
LIMITS: UNLESS OTHERWISE SPECIFIED HUND.±.02 FRACT.±1/64 THOU.±.005 ANGLE±1°	SCALE THIS IS A CONFIDENTIAL DRAWING AND MUSTBE TREATED AS SUCH. NO DISTRIBUTION IS ALLOWED WITHOUT WRITTEN APPROVAL BY EBY ELECTRO INC.	 PLAINVIEW, NY 11803		

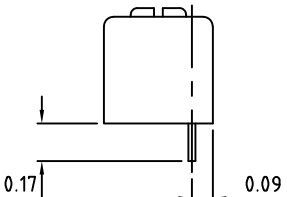
IMPORTANT DISCLAIMER: All information provided on this print is for reference. Always perform your own tests and acquire samples and further information to determine product suitability. While we make effort to provide accurate information, we cannot be responsible for errors either of omission or typographical. EBY Electro, Inc. assumes no responsibility for the use or suitability of any product. All products and specifications are subject to change without prior written notice.

METRIC LIMITS ONE PLACE ±0.3 TWO PLACES ±0.10 ANGLE ±1°	DRAWN JM CHECKED APPROVED	DATE 07/12/10 DATE DATE	SIZE A	DRAWING NUMBER: 5000-0001	REV. B
--	---------------------------------	-------------------------------	-----------	------------------------------	-----------

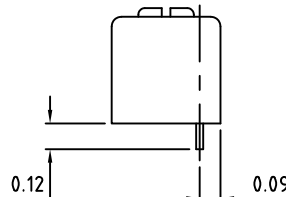
01 - Chassis Mount



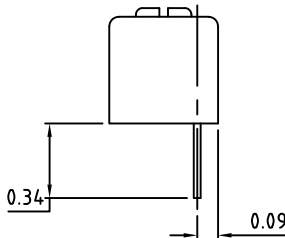
02 - PC



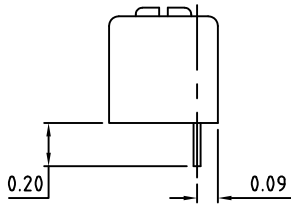
03 - Zero Trim PC



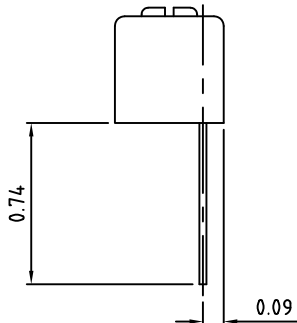
04 - Wire Wrap



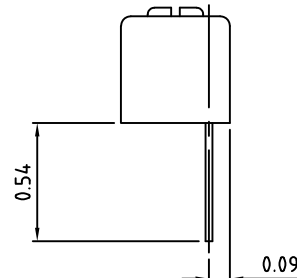
05 - Alternate PC



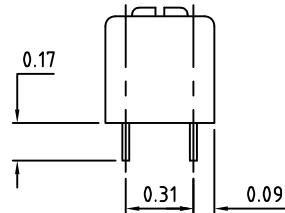
06 - Extended PC



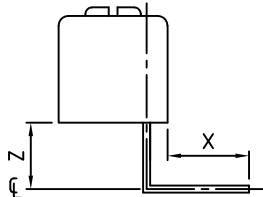
07 - Alternate Extended PC



22 - Dual PC



09 - Right Angle




Code	"X" Min	"Z" ±0.04	EBY Electro offers a wide selection of standard and custom right angle bends for single row PCB mounted terminal blocks. If the exact bend you require is not shown, contact us. Our unique right Angle Manufacturing Process allows any type of bend for the same price as a standard bend. we will give you exactly what you need, the first time and every time.
RA02	0.10"	0.15"	
RA04	0.15"	0.10"	
RA14	0.10"	0.35"	
RA16	0.15"	0.30"	
RA18	0.20"	0.25"	
RA20	0.25"	0.20"	

Terminal  
Options

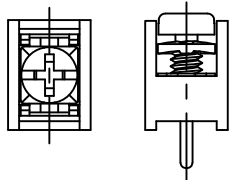
UNLESS OTHERWISE SPECIFIED BREAK ALL SHARP EDGES AND DEBURR ALL HOLES	TITLE: Part Number Configuration for 5000 Series	
	SCALE	THIS IS A CONFIDENTIAL DRAWING AND MUSTBE TREATED AS SUCH. NO DISTRIBUTION IS ALLOWED WITHOUT WRITTEN APPROVAL BY EBY ELECTRO INC.



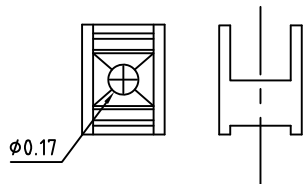
 RoHS Compliant	Rev.	ECO#	Date	By
	B	1425-1120	11/17/20	MWP

## Mounting Options

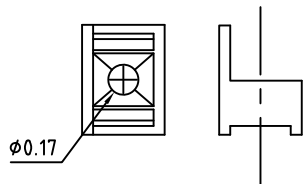
N - No Mounting Ends



H -  $\phi 0.170$ , No Plate  
With End Barriers



K -  $\phi 0.170$ , No Plate  
Without End Barriers



## Available Screw Options

- 00 - No Screws
- 01 - Steel, Zinc Plated,
- 02 - Steel, Zinc plated, w/ Washer
- 03 - Brass, Nickel Plated
- 04 - Brass, Nickel Plated, w/ Washer
- 11 - Steel, Zinc Plated, Captive
- 12 - Steel, Zinc Plated, Captive, w/ Washer
- 13 - Brass, Nickel Plated, Captive
- 14 - Brass, Nickel Plated, Captive, w/ Washer
- 21 - Steel, Zinc Plated, Captive, Wire Ready
- 22 - Steel, Zinc Plated, Captive, Wire Ready, w/ Washer
- 23 - Brass, Nickel Plated, Captive, Wire Ready
- 24 - Brass, Nickel Plated, Captive, Wire Ready, w/ Washer
- 32 - Steel, Nickel Plated, Captive, Wire Ready, w/Washer
- 46 - Steel, Zinc Plated, Thread Interrupt, Wire Ready, w/ Washer

Page 3 of 3

UNLESS OTHERWISE  
SPECIFIED BREAK ALL  
SHARP EDGES AND  
DEBURR ALL HOLES

TITLE:

Part Number Configuration for 5000 Series

LIMITS: UNLESS  
OTHERWISE SPECIFIED  
HUND.  $\pm 0.02$  FRACT.  $\pm 1/64$   
THOU.  $\pm 0.005$  ANGLE  $\pm 1^\circ$

SCALE

THIS IS A CONFIDENTIAL DRAWING AND  
MUST BE TREATED AS SUCH. NO  
DISTRIBUTION IS ALLOWED WITHOUT  
WRITTEN APPROVAL BY EBY ELECTRO INC.

**EBY** Electro Inc.  
PLAINVIEW, NY 11803

IMPORTANT DISCLAIMER: All information provided on this print is for reference. Always perform your own tests and acquire samples and further information to determine product suitability. While we make effort to provide accurate information, we cannot be responsible for errors either of omission or typographical. EBY Electro, Inc. assumes no responsibility for the use or suitability of any product. All products and specifications are subject to change without prior written notice.

METRIC LIMITS  
ONE PLACE  $\pm 0.3$   
TWO PLACES  $\pm 0.10$   
ANGLE  $\pm 1^\circ$

DRAWN JM  
CHECKED \_\_\_\_\_  
APPROVED \_\_\_\_\_

DATE 07/12/10  
DATE \_\_\_\_\_  
DATE \_\_\_\_\_

SIZE  
A

DRAWING NUMBER:

5000-0003

REV.  
B