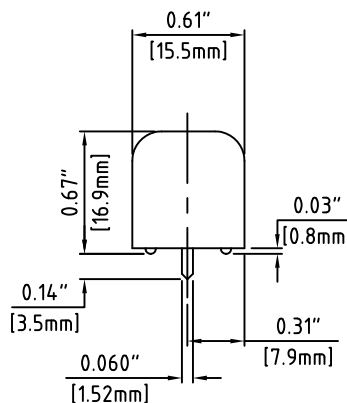
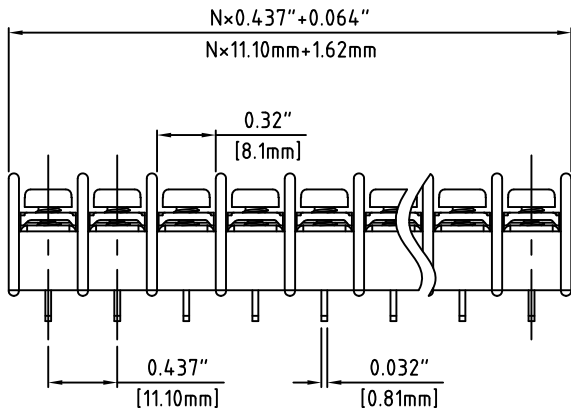
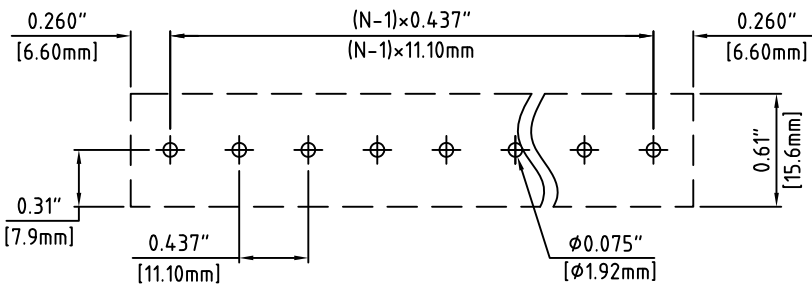
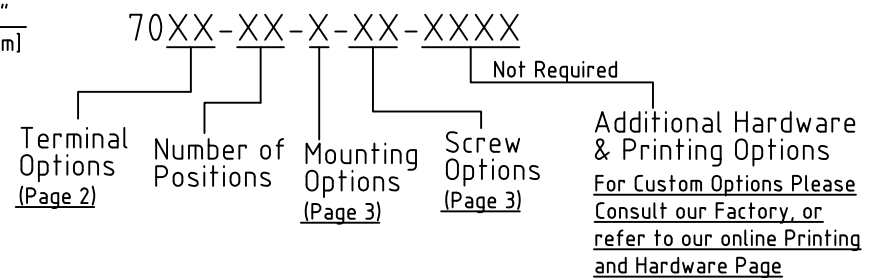


N=Number of Positions



Material:	
Contact Solder Pin:	Brass, Tin Plated
Insulating Body:	Polycarbonate, UL94V-0, Black
Terminal Screw:	#6-32, Combo Head, Brass, Ni Plated
Electrical	
Voltage Rating:	600 VAC
Current rating:	20 AMPS
Wire Range:	12-24 AWG
Mechanical	
Torque:	10.0 lbs-in. Max.
Operating Temperature:	-40°C to +105°C -40°F to +221°F
Soldering Temperature:	260°C, 500°F for 5 seconds max.
Safety Approval:	UL US

Part Number Configuration.



PCB Layout

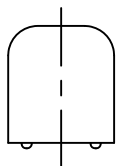
Max Number of Positions = 24

UNLESS OTHERWISE SPECIFIED BREAK ALL SHARP EDGES AND DEBURR ALL HOLES	TITLE:	0.437" SPACING, BARRIER BLOCK	
	LIMITS: UNLESS OTHERWISE SPECIFIED ONE PLACE ±0.3 HUND.±02 FRACT.±1/64 THOU.±005 ANGLE±1°	SCALE	THIS IS A CONFIDENTIAL DRAWING AND MUSTBE TREATED AS SUCH. NO DISTRIBUTION IS ALLOWED WITHOUT WRITTEN APPROVAL BY EBYP ELECTRO INC.
DRAWN JM		DATE 07/12/10	 PLAINVIEW, NY 11803
CHECKED _____		DATE _____	
APPROVED _____		DATE _____	DRAWING NUMBER: 7000-0001

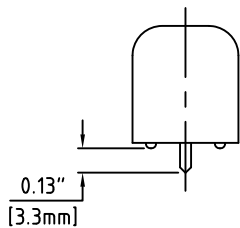
IMPORTANT DISCLAIMER: All information provided on this print is for reference. Always perform your own tests and acquire samples and further information to determine product suitability. While we make effort to provide accurate information, we cannot be responsible for errors either of omission or typographical. EBYP Electro, Inc. assumes no responsibility for the use or suitability of any product. All products and specifications are subject to change without prior written notice.

METRIC LIMITS ONE PLACE ±0.3 TWO PLACES ±0.10 ANGLE ±1°	DRAWING NUMBER: 7000-0001	REV.
--	---------------------------	------

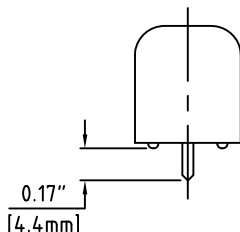
01 - Chassis Mount



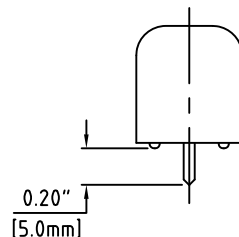
02 - Zero Trim PC



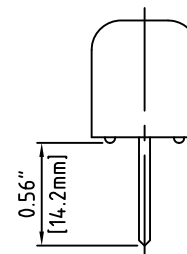
03 - Short PC



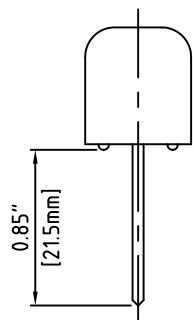
04 - PC



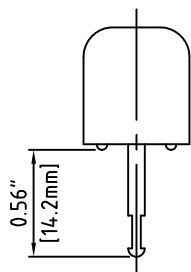
11 - Wire Wrap



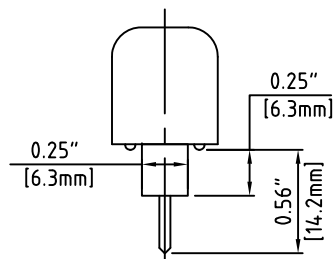
12 - Extended Wire Wrap



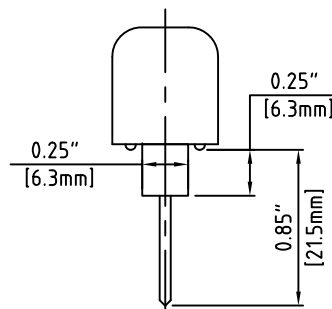
15 - Solder Turret



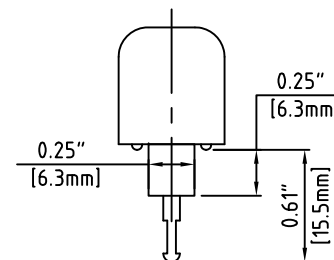
21 - Insulated PC



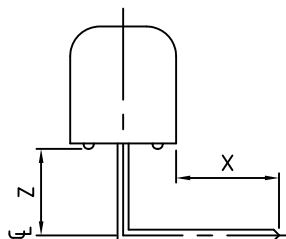
22 - Extended Insulated PC



23 - Insulated Solder Turret



33 - Right Angle



Code	"X" Min	"Z" ±0.04"	EBY Electro offers a wide selection of standard and custom right angle bends for single row PCB mounted terminal blocks. If the exact bend you require is not shown, contact us. Our unique right Angle Manufacturing Process allows any type of bend for the same price as a standard bend. we will give you exactly what you need, the first time and every time.
RA02	0.10"	0.17"	
RA04	0.15"	0.12"	
RA08	0.10"	0.48"	
RA10	0.15"	0.43"	
RA12	0.20"	0.38"	

Terminal Options

UNLESS OTHERWISE SPECIFIED BREAK ALL SHARP EDGES AND DEBURR ALL HOLES

TITLE: Part Number Configuration for 7000 Series

LIMITS: UNLESS OTHERWISE SPECIFIED
 HUND. ±0.2 FRACT. ±1/64
 THOU. ±0.005 ANGLE ±1°

SCALE THIS IS A CONFIDENTIAL DRAWING AND MUST BE TREATED AS SUCH. NO DISTRIBUTION IS ALLOWED WITHOUT WRITTEN APPROVAL BY EBYP ELECTRO INC.



IMPORTANT DISCLAIMER: All information provided on this print is for reference. Always perform your own tests and acquire samples and further information to determine product suitability. While we make effort to provide accurate information, we cannot be responsible for errors either of omission or typographical. EBYP Electro, Inc. assumes no responsibility for the use or suitability of any product. All products and specifications are subject to change without prior written notice.

METRIC LIMITS
 ONE PLACE ±0.3
 TWO PLACES ±0.10
 ANGLE ±1°

DRAWN JM DATE 07/12/10
 CHECKED DATE
 APPROVED DATE

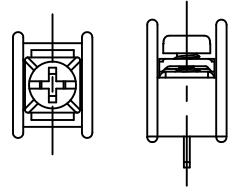
SIZE A

DRAWING NUMBER: 7000-0002

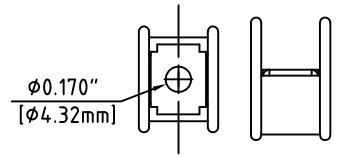
REV.

Mounting Options

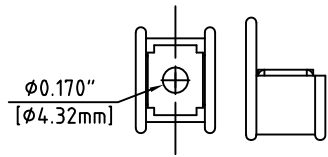
N - No Mounting Ends



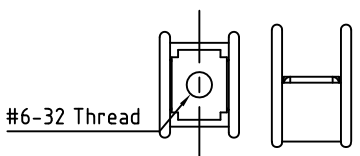
W - $\phi 0.170$ Mounting Plate With End Barriers



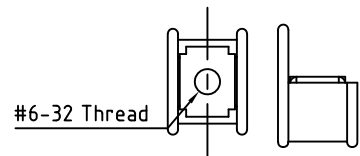
C - $\phi 0.170$ Mounting Plate Without End Barriers



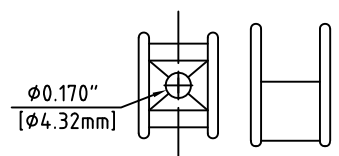
M - #6-32 Thread Plate With End Barriers



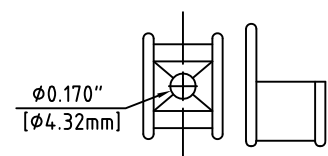
T - #6-32 Thread Plate Without End Barriers



H - $\phi 0.170$ No Plate With End Barriers



K - $\phi 0.170$ No Plate Without End Barriers



Available Screw Options

- 00 - No Screws
- 01 - Steel, Zinc Plated,
- 02 - steel, Zinc plated, w/ Washer
- 03 - Brass, Nickel Plated
- 04 - Brass, Nickel Plated, w/ Washer
- 05 - Stainless Steel, Phillips Head
- 11 - Steel, Zinc Plated, Captive
- 12 - Steel, Zinc Plated, Captive, w/ Washer
- 13 - Brass, Nickel Plated, Captive
- 14 - Brass, Nickel Plated, Captive, w/ Washer
- 21 - Steel, Zinc Plated, Captive, Wire Ready
- 22 - Steel, Zinc Plated, Captive, Wire Ready, w/ Washer
- 23 - Brass, Nickel Plated, Captive, Wire Ready
- 24 - Brass, Nickel Plated, Captive, Wire Ready, w/ Washer
- 46 - Steel, Zinc Plated, Thread Interrupt, Wire Ready, w/ Washer

UNLESS OTHERWISE SPECIFIED BREAK ALL SHARP EDGES AND DEBURR ALL HOLES

TITLE: Part Number Configuration for 7000 Series

LIMITS: UNLESS OTHERWISE SPECIFIED
 HUND. ± 0.02 FRACT. $\pm 1/64$ THOU. ± 0.005 ANGLE $\pm 1^\circ$

SCALE THIS IS A CONFIDENTIAL DRAWING AND MUST BE TREATED AS SUCH. NO DISTRIBUTION IS ALLOWED WITHOUT WRITTEN APPROVAL BY EBYP ELECTRO INC.

EBY Electro Inc.
 PLAINVIEW, NY 11803

IMPORTANT DISCLAIMER: All information provided on this print is for reference. Always perform your own tests and acquire samples and further information to determine product suitability. While we make effort to provide accurate information, we cannot be responsible for errors either of omission or typographical. EBYP Electro, Inc. assumes no responsibility for the use or suitability of any product. All products and specifications are subject to change without prior written notice.

METRIC LIMITS
 ONE PLACE ± 0.3
 TWO PLACES ± 0.10
 ANGLE $\pm 1^\circ$

DRAWN JM DATE 07/12/10 SIZE DRAWING NUMBER: 7000-0003 REV.

CHECKED DATE APPROVED DATE