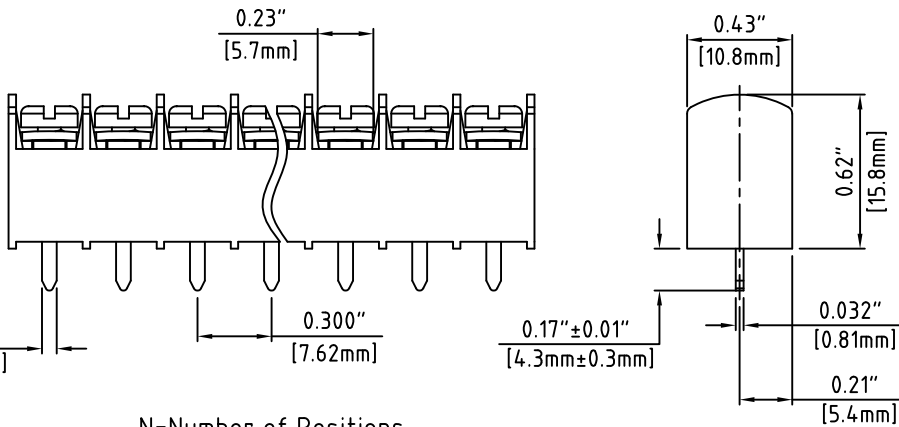
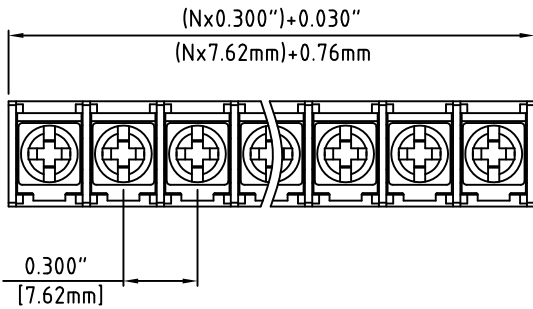
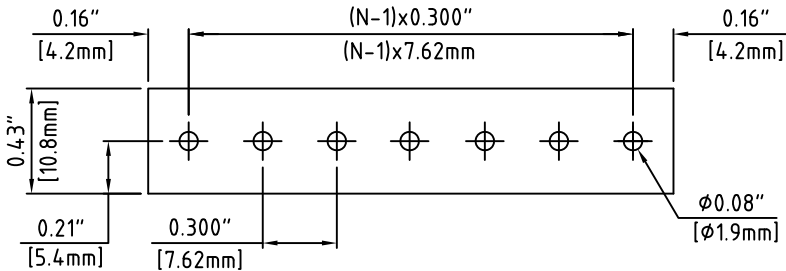


Rev	Description	Date	By



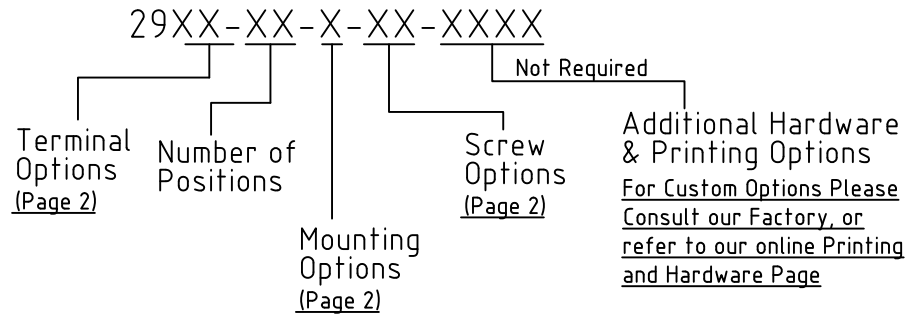
N=Number of Positions



P.C.B. Layout

Material:	
Contact Solder Pin:	Brass, Tin Plated
Terminal Screw:	#5-40, Steel, Zinc Plated, Phil Slot
Insulating Body:	Thermoplastic, UL94V-0, Black
Electrical	
Voltage Rating:	300 VAC
Current rating:	15 AMPS
Withstand Voltage:	1500 VAC, Test time 60 seconds
Wire Range:	14-22 AWG
Mechanical	
Torque:	7.5 lbs-in Max
Operating Temperature:	-40°C to +120°C -40°F to +248°F
Soldering Temperature:	260°C, 500°F for 5 seconds max.
Safety Approval:	UL US


Part Number Configuration



Max Number of Positions = 20

UNLESS OTHERWISE SPECIFIED BREAK ALL SHARP EDGES AND DEBURR ALL HOLES	TITLE: 0.300" SPACING, BARRIER TERMINAL BLOCK
---	---

LIMITS: UNLESS OTHERWISE SPECIFIED HUND.±.02 FRACT.±1/64 THOU.±.005 ANGLE±1°	SCALE	THIS IS A CONFIDENTIAL DRAWING AND MUSTBE TREATED AS SUCH. NO DISTRIBUTION IS ALLOWED WITHOUT WRITTEN APPROVAL BYEBY ELECTRO INC.	EBY Electro Inc. PLAINVIEW, NY 11803
--	-------	---	--

 RoHS Compliant

Rev.

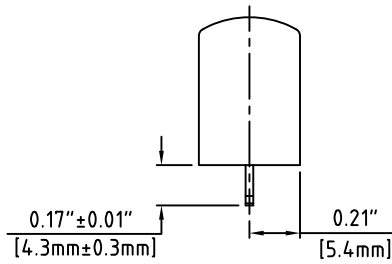
Decription/Eco

Date

By

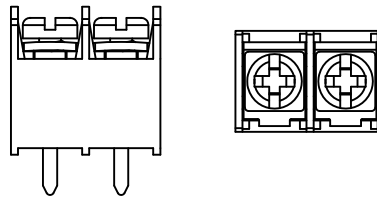
Terminal
Options

02 - PC



N - No Mounting Ends

Mounting
Options



Available Screw
Options

02 - steel, Zinc plated, w/ Washer

Page 2 of 2

UNLESS OTHERWISE SPECIFIED BREAK ALL SHARP EDGES AND DEBURR ALL HOLES

TITLE:

Part Number Configuration for 2900 Series

LIMITS: UNLESS OTHERWISE SPECIFIED
HUND. ± 0.2 FRACT. ± 1/64
THOU. ± 0.05 ANGLE ± 1°

SCALE

THIS IS A CONFIDENTIAL DRAWING AND MUSTBE TREATED AS SUCH. NO DISTRIBUTION IS ALLOWED WITHOUT WRITTEN APPROVAL BY EBYP ELECTRO INC.

 **EBYP** Electro Inc.
PLAINVIEW, NY 11803

IMPORTANT DISCLAIMER: All information provided on this print is for reference. Always perform your own tests and acquire samples and further information to determine product suitability. While we make effort to provide accurate information, we cannot be responsible for errors either of omission or typographical. EBYP Electro, Inc. assumes no responsibility for the use or suitability of any product. All products and specifications are subject to change without prior written notice.

METRIC LIMITS
ONE PLACE ± 0.3
TWO PLACES ± 0.10
ANGLE ± 1°

DRAWN JM
CHECKED _____
APPROVED _____

DATE 11/17/10
DATE _____
DATE _____

SIZE
A

DRAWING NUMBER:

2900-0002

REV.